

Linking ProTool/Pro Runtime V6.0 with PLCSIM V5.0 SP1

QUESTION:

Which settings have to be made to be able to link the ProTool/Pro Runtime V6.0 with the PLCSIM V5.0 SP1 when there is no MPI card installed in the PG/PC being used?

ANSWER:

If there is no MPI card installed in the configuration computer, then at least the PC adapter must be installed as interface for STEP 7 V5.1 SP4.

Please proceed as follows:

1. Select **Start >SIMATIC > STEP 7 > Set PG/PC interface**.
2. Click the "Select" button in "Interfaces Add/Remove".
3. Select "**PC-Adapter**" in the left window.
4. Click the "**Install**" button.

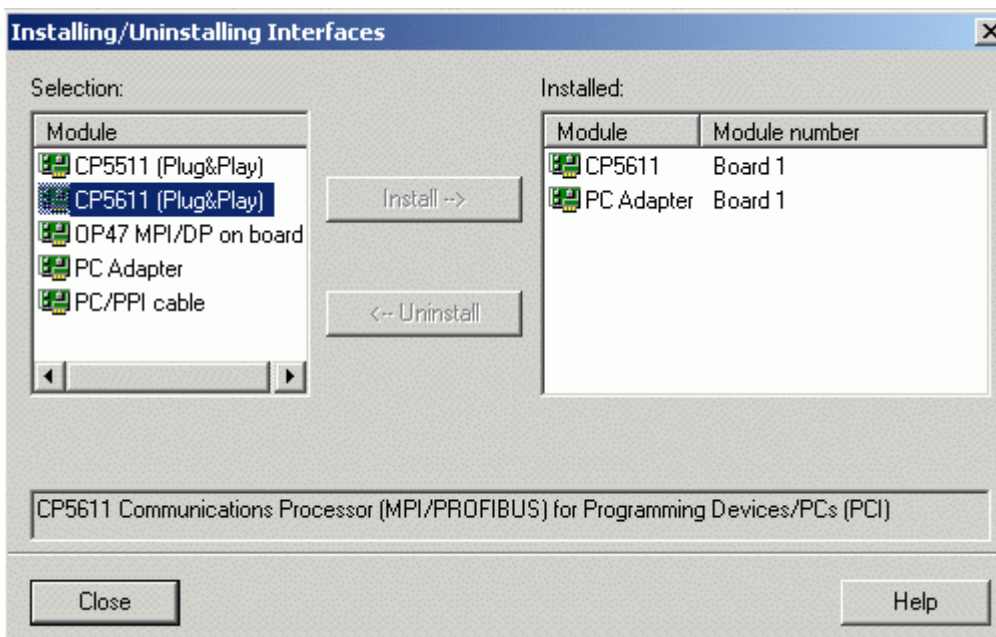


Fig. 1: Installing the interface

5. Close the dialog.
6. For "Access Point of the Application" set "**S7ONLINE > PC Adapter**".

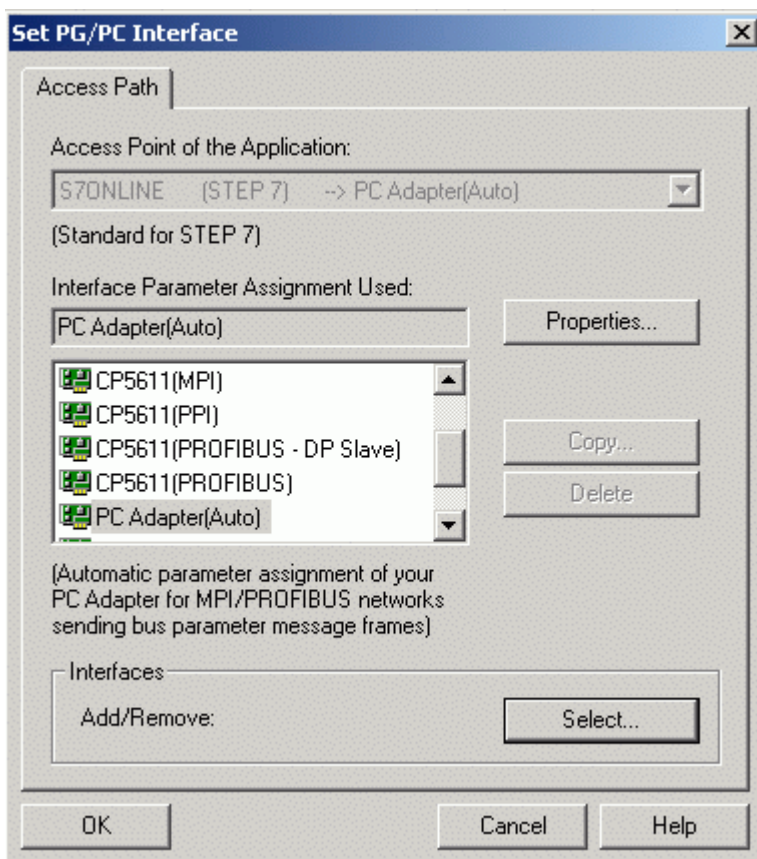


Fig. 2: Setting up the access point

Communication between ProTool/Pro Runtime V6.0 and PLCSIM V5.0 SP1 is enabled in this way.

Entry ID:13283804 **Date:**11/04/2002